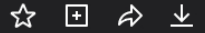
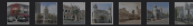


More of what makes Flickr great, for less: Upgrade to Flickr Pro and get 30% off your first two years. Sign up now.

Back to photostream



Geoff-inOz@Flickr



geoff-inOz

+ Follow

PRO

Pudu Prison, Shaw Road, Kuala Lumpur, Selangor

Built: 1895 - Architectural style: Indo-Saracenic

Also known as Pudu Gaol, Pudu Jail, Penjara Pudu, Pudoh Gaol and City Gaol.

In 1996 the prison was formally closed. It was used as a museum for a short period in 1997 and later by the police.

When I last visited the site in August 2011 it had been partially demolished.

1,599 views

0 faves

1 comment

Taken on August 22, 2011

All rights reserved

This photo is in 4 groups



Kuala Lumpur, Malaysia 8,942 items



architecture malaysia 3,601 items



Architecture 1,768,088 items



Indo-Saracenic Architecture 660 items

This photo is in 1 album



Kuala Lumpur, Selangor (Architecture) 70 items

This photo is currently not in any galleries Add to gallery

Tags

- kuala lumpur selangor
- malaya malaysia
- historic architecture
- colonial heritage
- building pudu prison
- jail kl

Additional info

- Viewing privacy
- Safety level
- Content type
- License History
- Flag Photo

Public Safe Photo



Show your appreciation with the gift of Flickr Pro



geoff-inOz 11y



Geoff-inOz@Flickr



Add a comment



 Favorite

 Comment

 Search

 Photo navigation

 Thumbnail navigation

 Zoom

 Back to context

 Invite to group

 Add to gallery

 Add tag

 Add a person

[About](#)

[Jobs](#)

[Blog](#)

[Developers](#)

[Guidelines](#)

[Help](#)

[Report abuse](#)

[Help forum](#)

[English](#) 

[Privacy](#)

[Terms](#)

[Cookies](#)

SmugMug+Flickr. Connecting people through photography.

